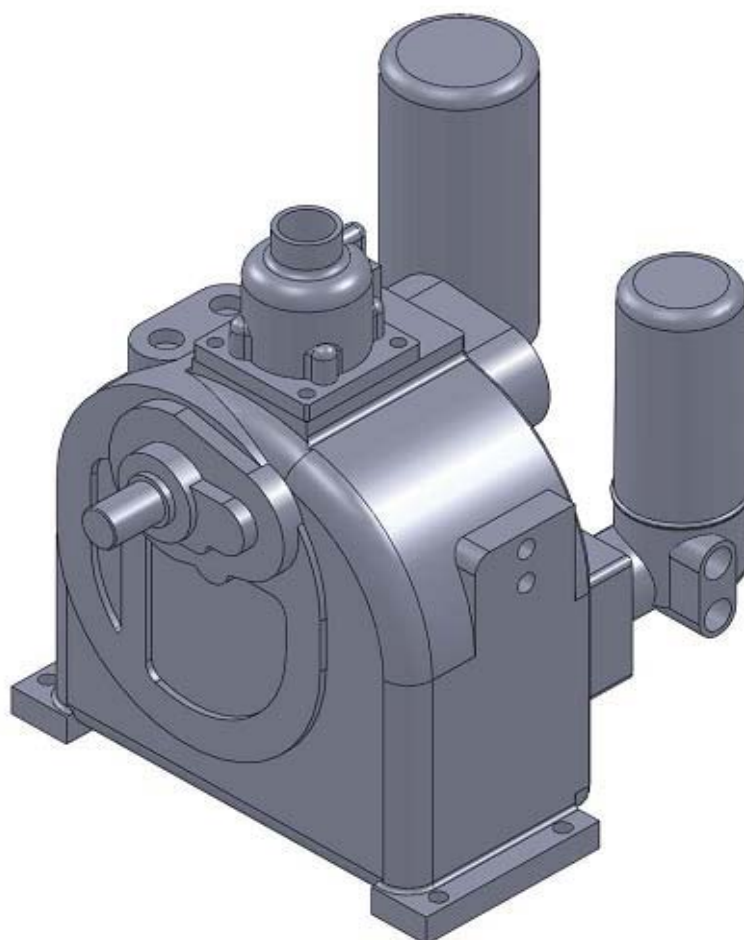


Oil-injected screw air end

## GCU15

<b>power range</b> [kw]	15
<b>volum flow max</b> [m <sup>3</sup> /min]	2.1
<b>Pressure max</b> [Barg]	12
<b>Male rotor speed max</b> [rpm]	8000
<b>Lobe combination</b>	4/6



# Performance data

## Performance statements according to ISO 1217

